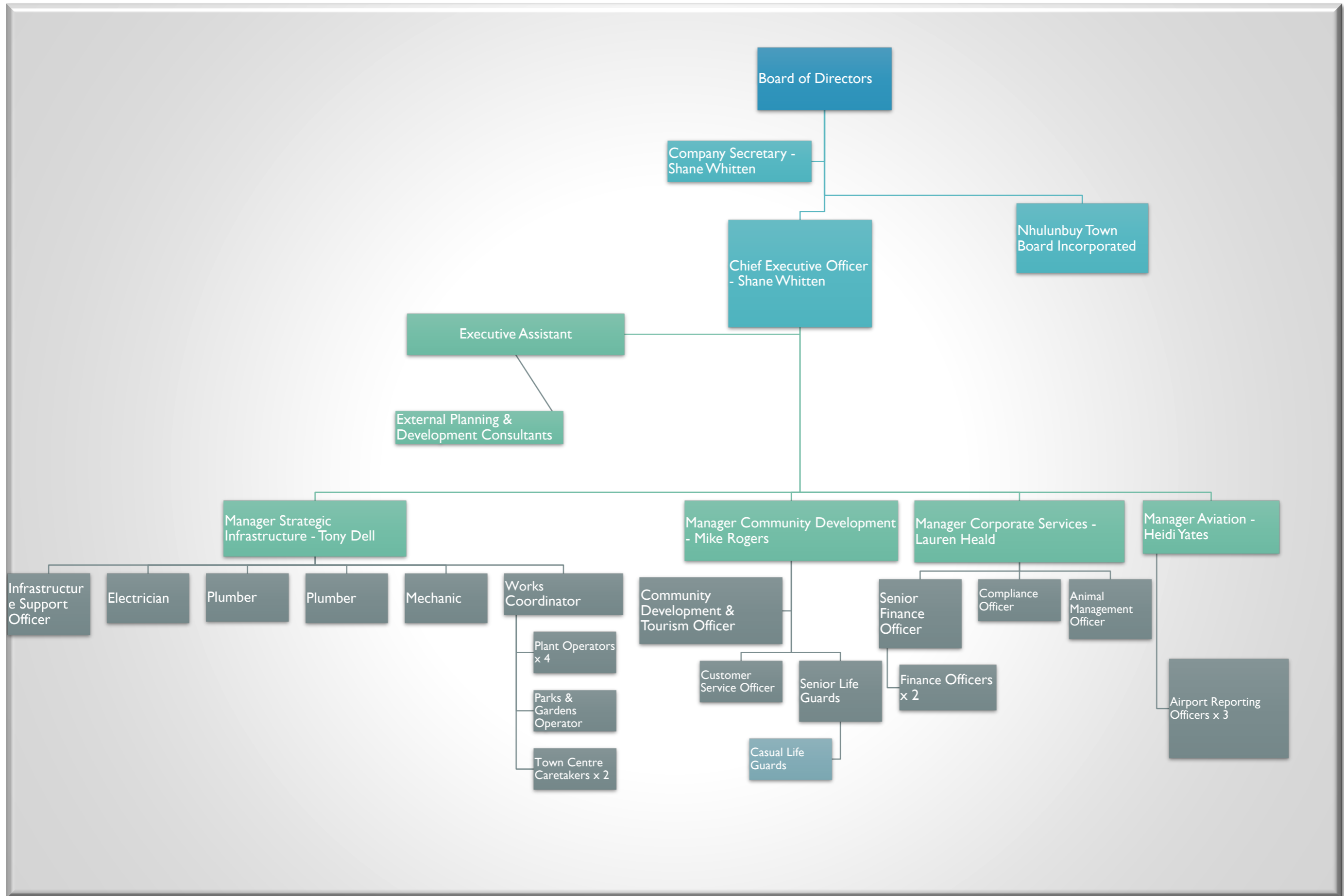


Nhulunbuy Corporation Organisation Chart



Nhulunbuy Corporation Organisation Chart

Chief Executive Officer

Shane Whitten
(0428) 748 868
ceo@ncl.net.au

Manager Strategic Infrastructure

Tony Dell
(0488) 333 900
msi@ncl.net.au

Manager Aviation & Compliance

Heidi Yates
(0448) 863 903
mac@ncl.net.au

Manager Corporate Services

Lauren Heald
(0401) 502 470
mcs@ncl.net.au

Manager Community Development

Mike Rogers
(0455) 552 338
mrogers@ncl.net.au